

Compact DSC Lens For 1/2" 1.3 Megapixel Imager**Description**

DSL808 lens is a multi-element glass lens optimized for 1/2" 1.0M and 1.3M CMOS imager. It is especially suited for building low-cost, compact digital cameras because of the low-profile property of the lens design.

Key Features

- Optimized for 1/2" 1.0 and 1.3M CMOS imagers (diagonal up to 8.6mm).
- All glass elements: compatible with outdoor environment
- Aperture F/3.2: long depth of focus, optimized for fixed focus operation
- Low profile design
- Compatible with external shutter/iris assembly.

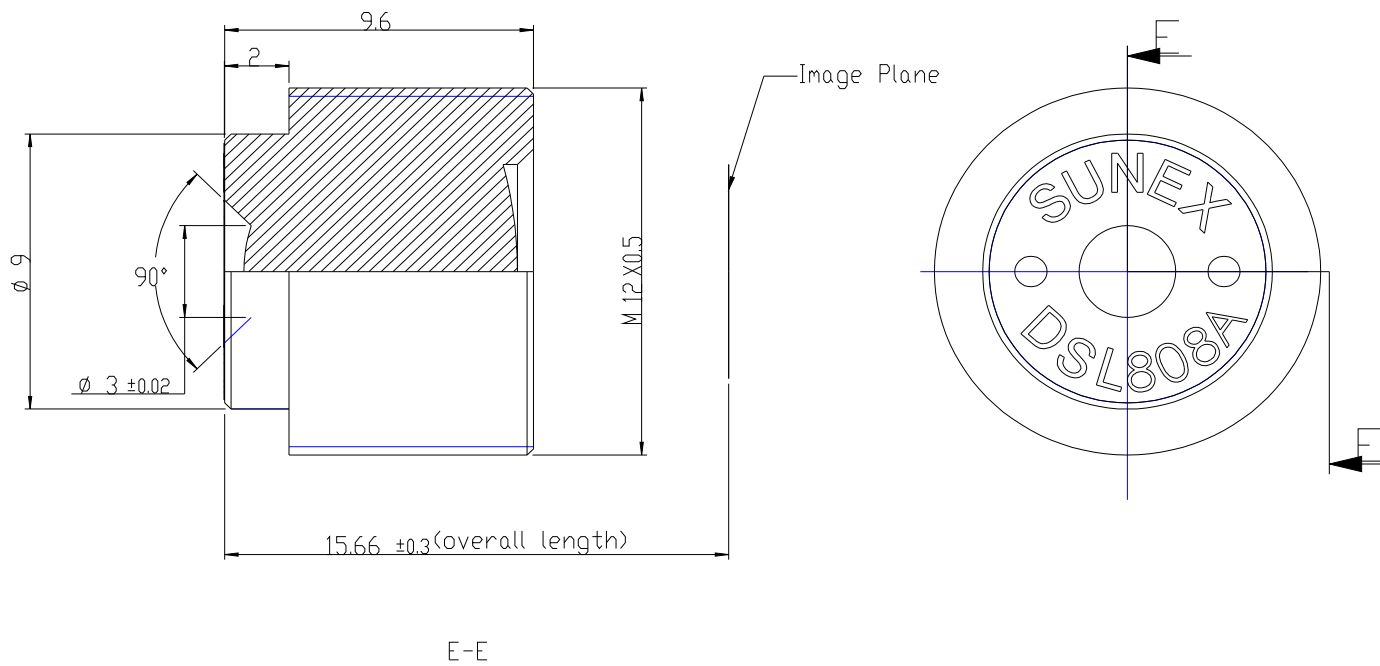
Applications

- Compact digital still cameras

Optical specifications

PN	DSL808
Description	Compact lens
Imager Format	~1/2" nominal
Imager Resolution	1280x1024
Focal length (mm)	9.2
F/#	3.2
Max. Image Circle(mm)	8.8
Diagonal Field of View (deg)	50
Modulation Transfer Function (MTF)	See MTF data for details
Resolution	See MTF data for details
Distortion	-1.85%
Corner chief ray angle (deg)	12.8
Relative Illumination	65%
Total optical path length (mm)	15.6
Mechanical	See below
Filter Option	IR coating included. Default wavelength 650nm
Lens mount option	CMT821

Mechanical Dimension (DSL808A version):



Mechanical Dimension (DSL808B version):

