

**Glass lens for 2/3” CMOS and CCD imagers**

**Description**

The DSL901 lens is a multi-element glass lens optimized for megapixel CMOS and CCD imagers with up to a 2/3” format.

**Key Features**

- All glass elements for environmental stability
- F/3.0 aperture provides good low-light performance with long depth of focus
- High image quality (MTF)
- An optical low-pass filter is recommended for use with this lens for best results

**Applications**

- Compact digital still cameras
- Industrial and Machine vision cameras

**Sunex PN DSL901**

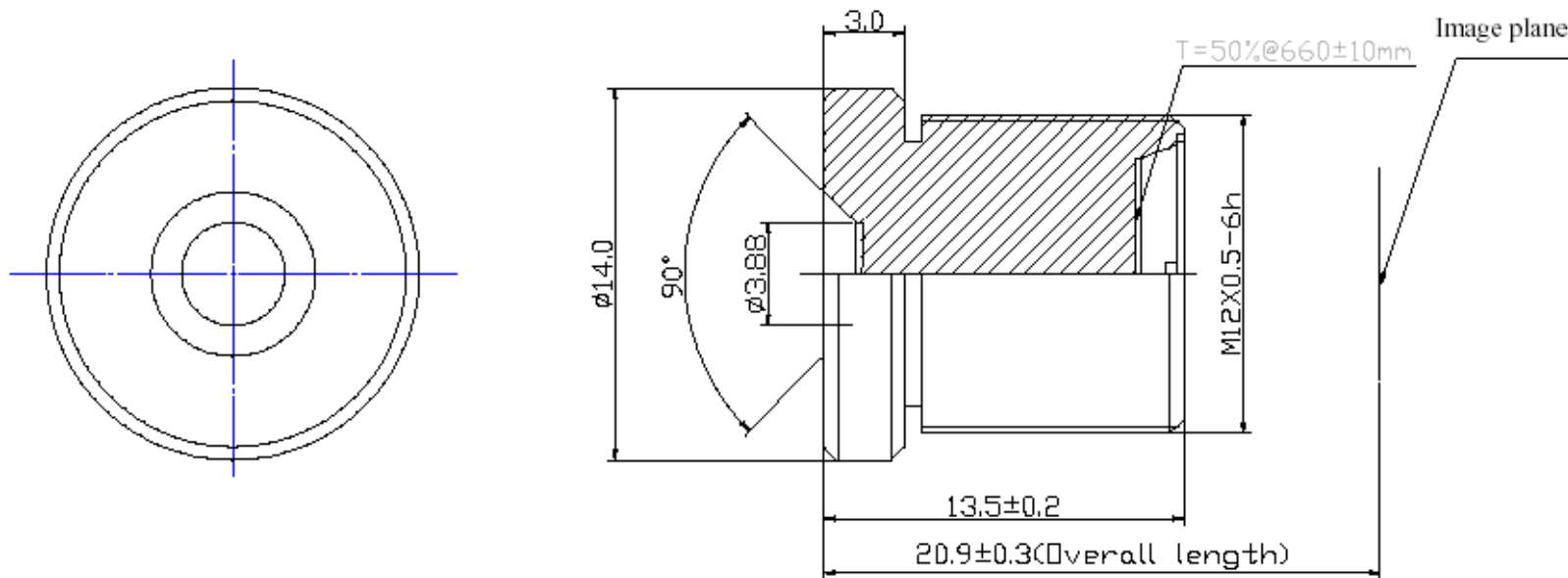
Description	Standard DSC lens
<b>Imager Format</b>	2/3”
<b>Focal length [mm]</b>	12.0
<b>F/#</b>	3.0
<b>Design Image Circle [mm]</b>	12.0
<b>Diagonal Field of View [degrees]</b>	53° on 2/3”
<b>Resolution</b>	See MTF data for details
<b>Distortion</b>	-0.92%
<b>Corner chief ray angle [degrees]</b>	13°
<b>Relative Illumination [@ full field]</b>	45%
<b>Mechanical</b>	See drawing below
<b>IR cut-off filter</b>	IR cut filter optional

SUBJECT TO CHANGE WITHOUT NOTICE

8-Oct-10

Sunex USA • Carlsbad, CA • Phone 760.602.0988 • Fax 760.602.0681  
 Sunex China • Shanghai • Phone 86 21 5774 6968 • Fax 86 21 5774 0268  
[www.sunex.com](http://www.sunex.com) or order online at [www.optics-online.com](http://www.optics-online.com)

DSL901J / DSL901J-NIR - Mechanical Dimensions



Just for reference

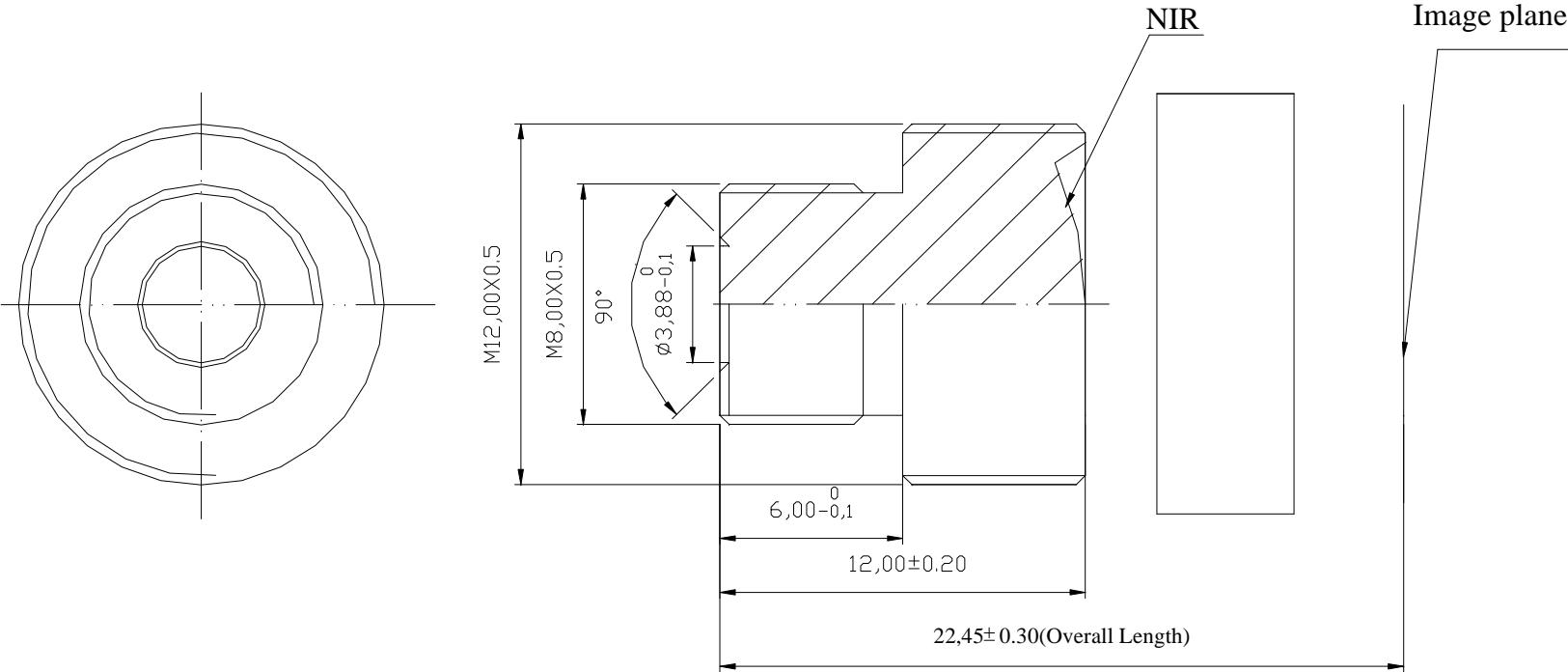
Barrel Material: Anodized AL(Ly12)

SUBJECT TO CHANGE WITHOUT NOTICE

8-Oct-10

Sunex USA • Carlsbad, CA • Phone 760.602.0988 • Fax 760.602.0681  
Sunex China • Shanghai • Phone 86 21 5774 6968 • Fax 86 21 5774 0268  
[www.sunex.com](http://www.sunex.com) or order online at [www.optics-online.com](http://www.optics-online.com)

DSL901C-NIR - Mechanical Dimensions



SUBJECT TO CHANGE WITHOUT NOTICE

8-Oct-10

Sunex USA • Carlsbad, CA • Phone 760.602.0988 • Fax 760.602.0681  
Sunex China • Shanghai • Phone 86 21 5774 6968 • Fax 86 21 5774 0268  
[www.sunex.com](http://www.sunex.com) or order online at [www.optics-online.com](http://www.optics-online.com)