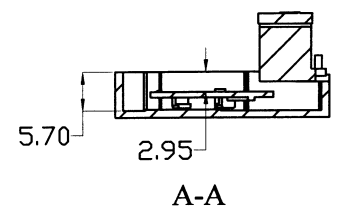
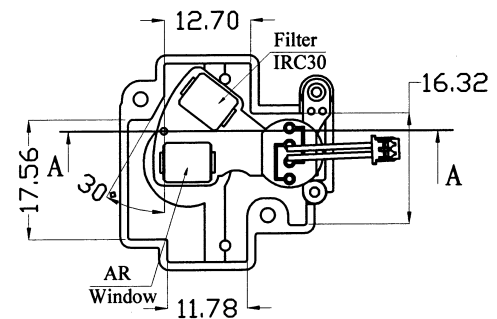
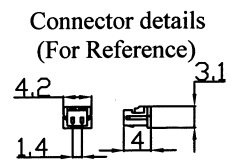
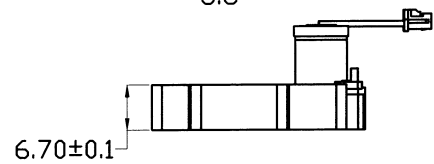
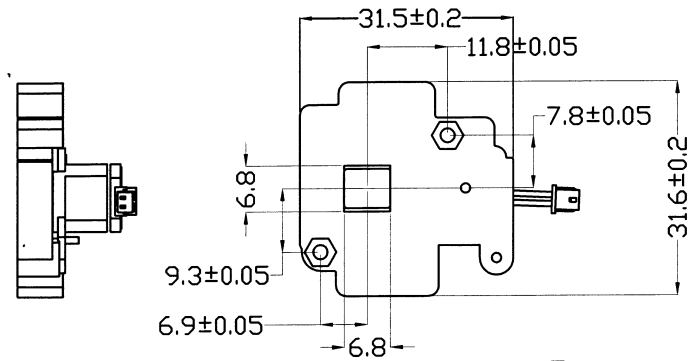




Note:

1. Holder and vane Material: PC(Black)
2. Electric specification:
 - Rating voltage: 3.0DCV
 - Power consumption: 0.81W at 3.0DCV
 - Work voltage: 2.5 to 3.5DCV
 - Rating current: 270mA
 - DC resistance: 11~12OHM at 20 °C
 - Insulation resistance: 50M OHM min at 500V
 - Resist voltage: 250V AC 1 Minute
 - Work temperature: -10 to +40
 - Lifetime : 30000 times min
3. Standard 2-pin connector with >70mm wire
4. Reverse anode/cathode for operation
5. The thickness of the AR Window \geq the thickness of the Filter IRC30
 The thickness of the AR Window - the thickness of the Filter IRC30 = 0~0.05mm
6. Work mode:
 - night mode: AR Window(1.2mm thickness)
 - day mode: Filter IRC30 (1.2mm thickness)



D					
C				Default tolerance	
B				Angle	1°
A	INITIAL RELEASE.	07.21/11	Jeff	X.X	±0.10
NO.	REVISION CONTENT	DATE	NAME	X.XX	±0.05

Quantity	GR		Material	Sunex China Tel:0086-21-57740097 Fax:0086-21-57740268	
Total	1	No			
Marker	signature		Date	Part Name CCS-EXM-IRC30	
Design	Jeff		07.21/11		
Check	Frank		7.21/11	Description Spec	
Approve	[Signature]		7.21/11		
Unit	mm	Scale		SN 1107212023	
Rev	A				