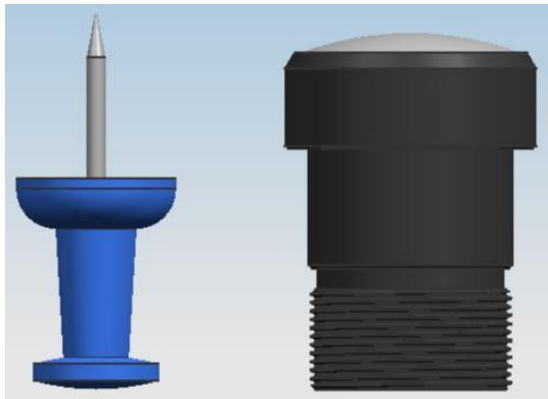


HDR Fisheye Lens



Description

The DSL168 is a fisheye lens with no ghost (120dB) functionality, ideal for HD/HDR imagers with VDA to multi-megapixel resolution. Hybrid construction allows for a cost-effective solution with low F/#, optimal performance, and tailored distortion characteristics.

Key Features

- Hybrid construction
- Tailored Distortion
- 120dB HDR

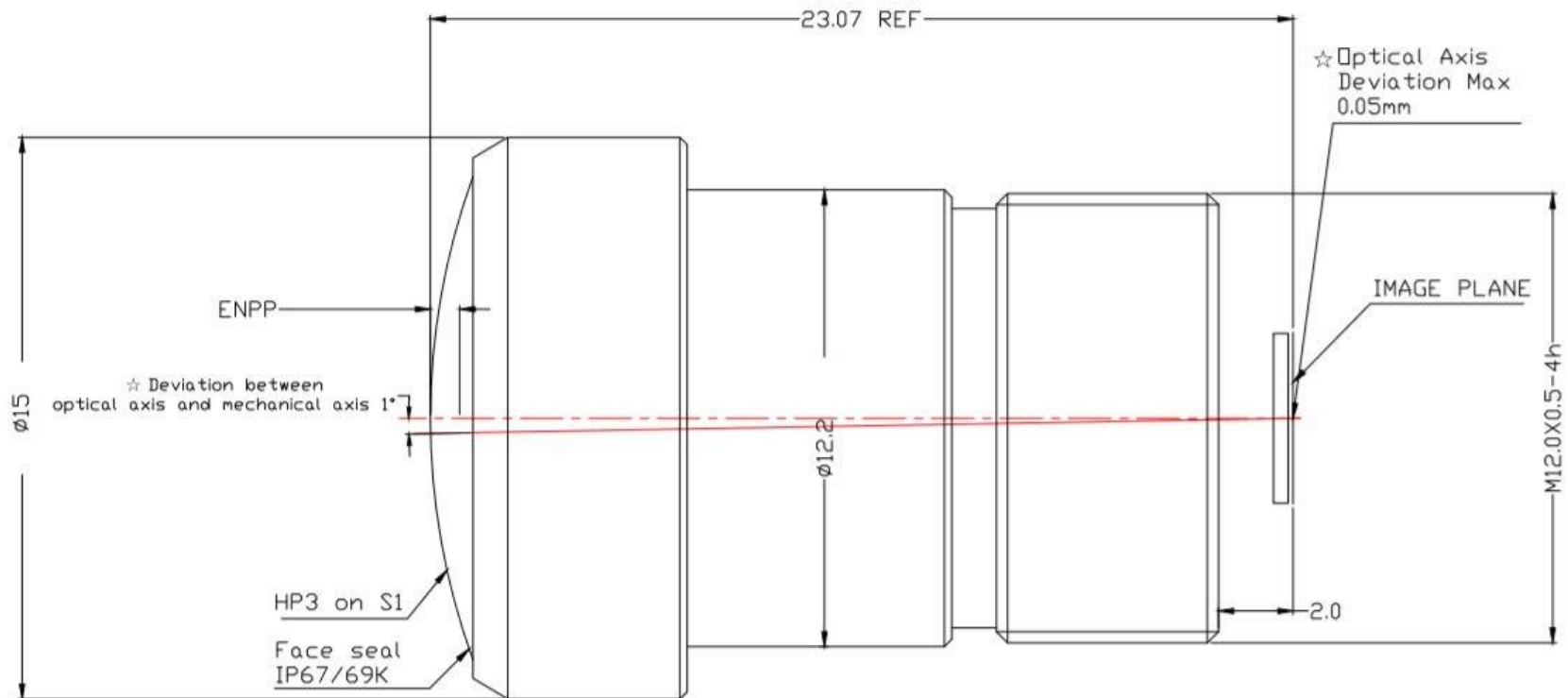
Optical Specifications

Sunex PN DSL168	
Description	HDR
Imager Format	1/4"
Nominal Imager Resolution	3MP
Focal Length	1.32mm
Relative Aperture (F/#)	2.0
Image Circle	4.6mm
Field of View	186.6° @4.6mm image circle
Total Track Length	23.07mm
Distortion	9.4% f-theta
Chief Ray Angle	16.4° @4.6mm image circle
IR cut-off filter	-650nm

Applications

- Automotive
- Security
- IOT

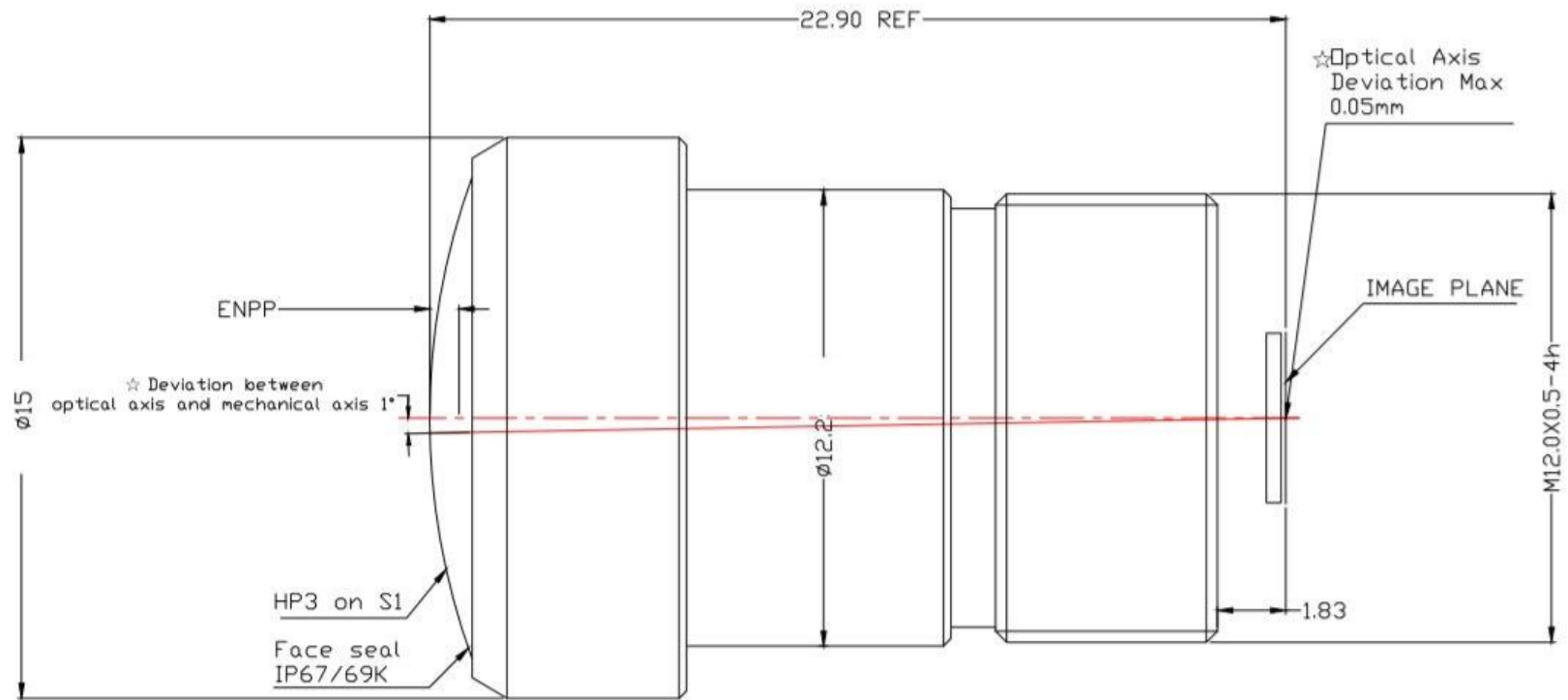
DSL168A-650-F2.0 Mechanical Dimensions [mm]:



Notes:

1. EFL: 1.32 ± 0.1
2. F#: 2.0 ± 0.1
3. Barrel material: Black anodized AL6061
Cap material: Black anodized AL6061
4. IR cut coating: $T=50\% @ 650 \pm 20\text{nm}$

DSL168A-NIR-F2.0 Mechanical Dimensions [mm]:



- Notes:
- 1.EFL:1.32 \pm 0.1
 - 2.F#:2.0 \pm 0.1
 - 2.Barrel material:Black anodized AL6061
Cap material:Black anodized AL6061