

Miniature HD/HDR Lens



Description

The DSL946 is a compact, low F/# lens designed for low light HD/HDR applications. It is optimized for use HD sensors with imager format up to 1/3". Stray light effects such as flare and ghosting have been minimized.

Key Features

- Low F/#, F/1.6
- Minimized stray light effects: flare, halo, ghosting
- Compact size: 8mm diameter available
- All-glass construction optimizes thermal stability

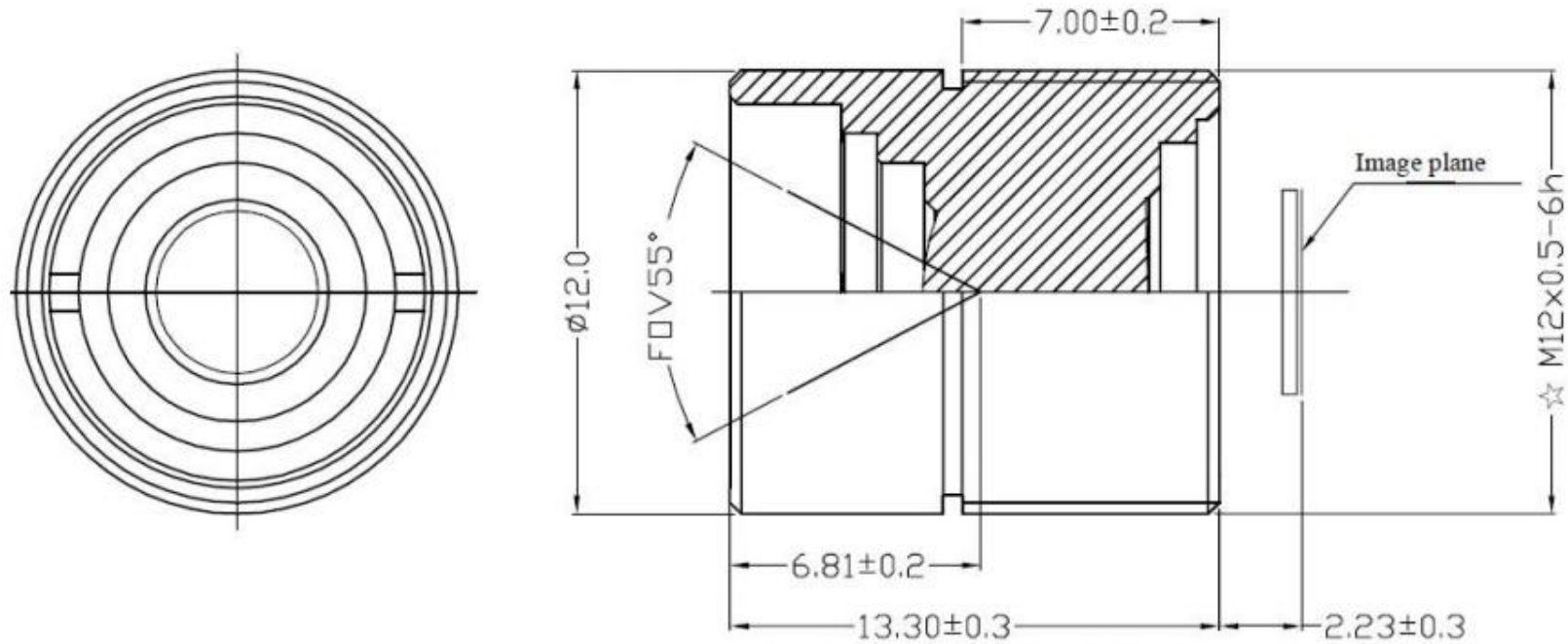
Optical Specifications

Sunex PN DSL946	
Description	Miniature Low-Light HDR Lens
Imager Format	1/3"
Nominal Imager Resolution	1.3MP
Focal Length	5.7mm
Relative Aperture (F/#)	F/1.6
Image Circle	5.4
Field of View	55° at 5.4mm image circle
Total Track Length	15.5mm
Distortion	-6.4% at 5.4mm image circle, rectilinear
Chief Ray Angle	15.5° at 5.4mm image circle, linear
IR cut-off filter	Optional IR cutoff filter at 700nm

Applications

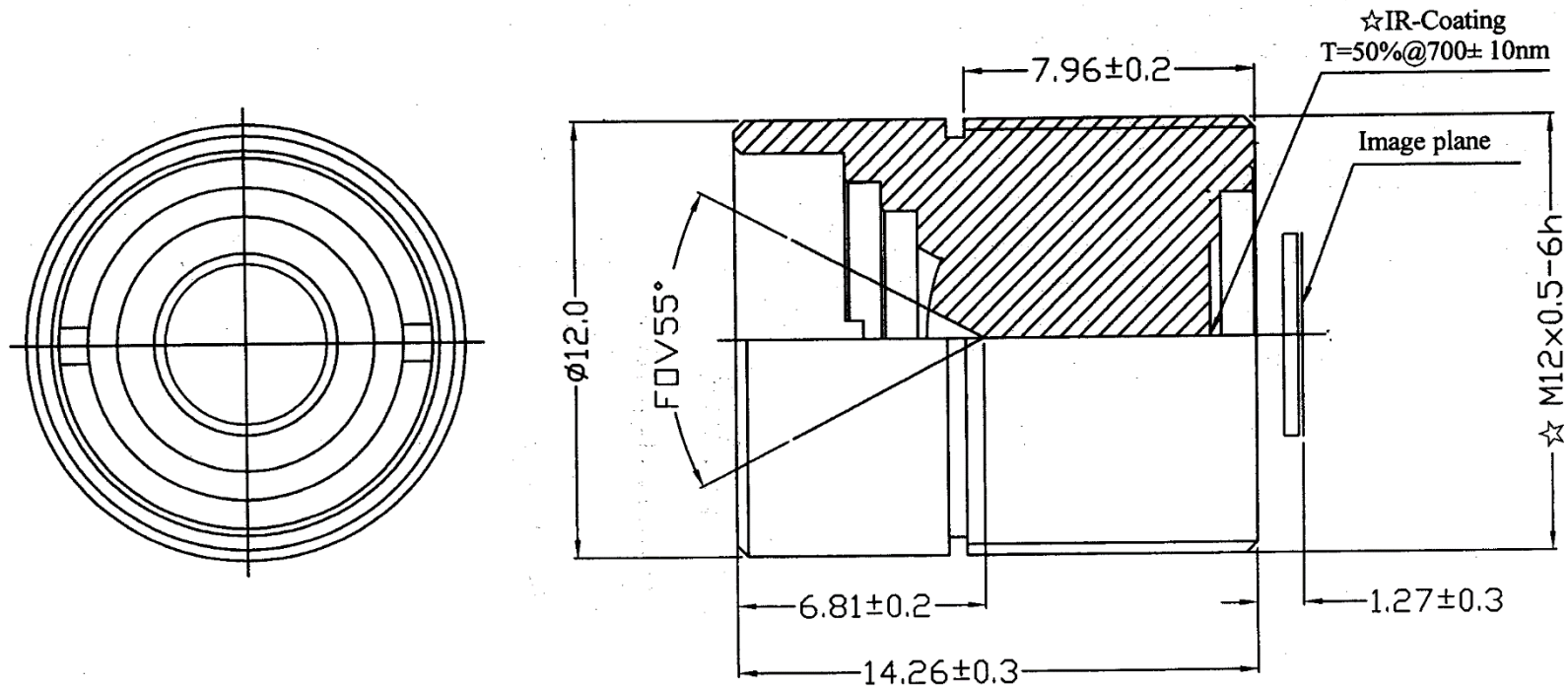
- Automotive Forward Machine Vision (Sensing)
- Police Cameras
- Computer Vision

DSL946B-NIR-F1.6 Mechanical Dimensions [mm]:



DSL946C-700-F1.6 and DSL946C-NIR-F1.6 Mechanical Dimensions [mm]:

Note: DSL946C is intended for use with Sunex CMT821 mount



DSL946D-700-F1.6 and DSL946D-NIR-F1.6 Mechanical Dimensions [mm]:

